

Acta Crystallographica Section E

## Structure Reports

Online

ISSN 1600-5368

## 2-(4-Fluorophenyl)-5,6-methylenedioxy-3-methylsulfinyl-1-benzofuran

Hong Dae Choi,<sup>a</sup> Pil Ja Seo,<sup>a</sup> Byeng Wha Son<sup>b</sup> and Uk Lee<sup>b\*</sup><sup>a</sup>Department of Chemistry, Donggeui University, San 24 Kaya-dong Busanjin-gu, Busan 614-714, Republic of Korea, and <sup>b</sup>Department of Chemistry, Pukyong National University, 599-1 Daeyeon 3-dong, Nam-gu, Busan 608-737, Republic of Korea

Correspondence e-mail: uklee@pknu.ac.kr

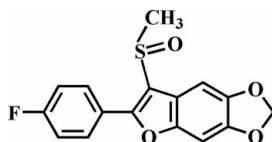
Received 5 January 2010; accepted 6 February 2010

Key indicators: single-crystal X-ray study;  $T = 173$  K; mean  $\sigma(\text{C}-\text{C}) = 0.002$  Å;  $R$  factor = 0.033;  $wR$  factor = 0.096; data-to-parameter ratio = 11.6.

In the title compound,  $\text{C}_{16}\text{H}_{11}\text{FO}_4\text{S}$ , the O atom and the methyl group of the methylsulfinyl substituent are located on opposite sides of the mean plane through the 5,6-(methylenedioxy)benzofuran fragment. The 4-fluorophenyl ring is rotated out of the 5,6-(methylenedioxy)benzofuran plane, making a dihedral angle of  $29.90$  ( $6$ )°. In the crystal structure, both intermolecular  $\text{C}-\text{H}\cdots\text{O}$  hydrogen bonds link the molecules into centrosymmetric dimers. The combination of  $\text{C}-\text{H}\cdots\text{O}$  hydrogen bonds result in chains running along  $[1\bar{1}\bar{1}]$ .

## Related literature

For the structures of similar 5,6-methylenedioxy-1-benzofuran derivatives, see: Choi *et al.* (2007, 2009). For the pharmacological properties of benzofuran compounds, see: Howlett *et al.* (1999); Twyman & Allsop (1999). For natural products with benzofuran rings, see: Akgul & Anil (2003); von Reuss & König (2004).



## Experimental

## Crystal data

 $\text{C}_{16}\text{H}_{11}\text{FO}_4\text{S}$  $M_r = 318.31$ 

Triclinic,  $P\bar{1}$   
 $a = 8.0283$  (7) Å  
 $b = 8.4072$  (7) Å  
 $c = 10.6611$  (9) Å  
 $\alpha = 85.735$  (1)°  
 $\beta = 86.319$  (1)°  
 $\gamma = 68.110$  (1)°

$V = 665.33$  (10) Å<sup>3</sup>  
 $Z = 2$   
 Mo  $K\alpha$  radiation  
 $\mu = 0.27$  mm<sup>-1</sup>  
 $T = 173$  K  
 $0.40 \times 0.40 \times 0.20$  mm

## Data collection

Bruker SMART APEXII CCD diffractometer  
 Absorption correction: multi-scan (SADABS; Bruker, 2009)  
 $T_{\min} = 0.899$ ,  $T_{\max} = 0.948$

4954 measured reflections  
 2325 independent reflections  
 2153 reflections with  $I > 2\sigma(I)$   
 $R_{\text{int}} = 0.036$

## Refinement

$R[F^2 > 2\sigma(F^2)] = 0.033$   
 $wR(F^2) = 0.096$   
 $S = 1.04$   
 2325 reflections

200 parameters  
 H-atom parameters constrained  
 $\Delta\rho_{\text{max}} = 0.76$  e Å<sup>-3</sup>  
 $\Delta\rho_{\text{min}} = -0.34$  e Å<sup>-3</sup>

Table 1

Hydrogen-bond geometry (Å, °).

$D-\text{H}\cdots A$	$D-\text{H}$	$\text{H}\cdots A$	$D\cdots A$	$D-\text{H}\cdots A$
$\text{C3}-\text{H3}\cdots\text{O2}^i$	0.93	2.54	3.383 (2)	151
$\text{C14}-\text{H14}\cdots\text{O4}^{ii}$	0.93	2.57	3.368 (2)	144

Symmetry codes: (i)  $-x + 1, -y + 1, -z + 2$ ; (ii)  $-x + 2, -y, -z + 1$ .

Data collection: APEX2 (Bruker, 2009); cell refinement: SAINT (Bruker, 2009); data reduction: SAINT; program(s) used to solve structure: SHELXS97 (Sheldrick, 2008); program(s) used to refine structure: SHELXL97 (Sheldrick, 2008); molecular graphics: ORTEP-3 (Farrugia, 1997) and DIAMOND (Brandenburg, 1998); software used to prepare material for publication: SHELXL97.

Supplementary data and figures for this paper are available from the IUCr electronic archives (Reference: KJ2140).

## References

- Akgul, Y. Y. & Anil, H. (2003). *Phytochemistry*, **63**, 939–943.  
 Brandenburg, K. (1998). DIAMOND. Crystal Impact GbR, Bonn, Germany.  
 Bruker (2009). APEX2, SADABS and SAINT. Bruker AXS Inc., Madison, Wisconsin, USA.  
 Choi, H. D., Seo, P. J., Lee, H. K., Son, B. W. & Lee, U. (2007). *Acta Cryst.* **E63**, o519–o520.  
 Choi, H. D., Seo, P. J., Son, B. W. & Lee, U. (2009). *Acta Cryst.* **E65**, o2503.  
 Farrugia, L. J. (1997). *J. Appl. Cryst.* **30**, 565.  
 Howlett, D. R., Perry, A. E., Godfrey, F., Swatton, J. E., Jennings, K. H., Spitzfaden, C., Wadsworth, H., Wood, S. J. & Markwell, R. E. (1999). *Biochem. J.* **340**, 283–289.  
 Reuss, S. H. von & König, W. A. (2004). *Phytochemistry*, **65**, 3113–3118.  
 Sheldrick, G. M. (2008). *Acta Cryst.* **A64**, 112–122.  
 Twyman, L. J. & Allsop, D. (1999). *Tetrahedron Lett.* **40**, 9383–9384.

**supplementary materials**

*Acta Cryst.* (2010). E66, o605 [ doi:10.1107/S1600536810004745 ]

## 2-(4-Fluorophenyl)-5,6-methylenedioxy-3-methylsulfinyl-1-benzofuran

H. D. Choi, P. J. Seo, B. W. Son and U. Lee

### Comment

Benzofuran ring systems have received considerable attention in view of their pharmacological properties (Howlett *et al.*, 1999; Twyman & Allsop, 1999) and their occurrence as natural products (Akgul & Anil, 2003; von Reuss & König, 2004). As a part of our ongoing studies of the effect of side chain substituents on the solid state structures of 5,6-methylenedioxy-1-benzofuran analogues (Choi *et al.*, 2007,2009), we report the crystal structure of the title compound (Fig.1).

The 5,6-(methylenedioxy)benzofuran unit is essentially planar, with a mean deviation of 0.060 (2) Å from the least-squares plane defined by the twelve constituent atoms. The dihedral angle formed by the plane of the 5,6-(methylenedioxy)benzofuran ring and the plane of 4-fluorophenyl ring is 29.90 (6).

In the crystal packing, both intermolecular C—H $\cdots$ O hydrogen bonds (C3—H3 $\cdots$ O2 and C14—H14 $\cdots$ O4) link the molecules into dimers (Table 1, Figure 2). Together, the C—H $\cdots$ O hydrogen-bond interactions link the molecules into a one-dimensional chain running in the [1, -1, -1] direction.

### Experimental

77% 3-chloroperoxybenzoic acid (247 mg, 1.1 mmol) was added in small portions to a stirred solution of 2-(4-fluorophenyl)-5,6-methylenedioxy-3-methylsulfonyl-1-benzofuran (302 mg, 1.0 mmol) in dichloromethane (30 ml) at 273 K. After being stirred at room temperature for 2h, the mixture was washed with saturated sodium bicarbonate solution and the organic layer was separated, dried over magnesium sulfate, filtered and concentrated in vacuum. The residue was purified by column chromatography (hexane–ethyl acetate, 1:1 v/v) to afford the title compound as a colorless solid [yield 71%, m.p. 488–489 K;  $R_f$  = 0.51 (hexane–ethyl acetate, 1:2 v/v)]. Single crystals suitable for X-ray diffraction were prepared by slow evaporation of a solution of the title compound in chloroform at room temperature.

### Refinement

All H atoms were geometrically positioned and refined using a riding model, with C—H = 0.93 Å for aryl, 0.97 Å for methylene, and 0.96 Å for methyl H atoms.  $U_{iso}(H) = 1.2U_{eq}(C)$  for aryl and methylene H atoms, and  $1.5U_{eq}(C)$  for methyl H atoms.

### Figures

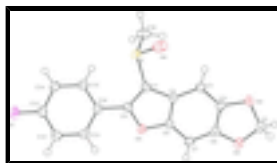


Fig. 1. The molecular structure of the title compound with the atom numbering scheme. Displacement ellipsoids are drawn at the 50 % probability level.

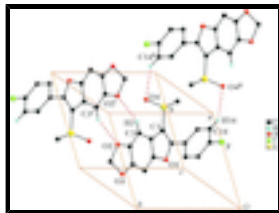


Fig. 2. C—H...O interactions (dotted lines) in the crystal structure of the title compound. [Symmetry codes: (i)  $-x + 1, -y + 1, -z + 2$ ; (ii)  $-x + 2, -y, -z + 1$ .]

## 2-(4-Fluorophenyl)-5,6-methylenedioxy-3-methylsulfinyl-1-benzofuran

### Crystal data

$C_{16}H_{11}FO_4S$	$Z = 2$
$M_r = 318.31$	$F(000) = 328$
Triclinic, $P\bar{1}$	$D_x = 1.589 \text{ Mg m}^{-3}$
Hall symbol: $-P 1$	Mo $K\alpha$ radiation, $\lambda = 0.71073 \text{ \AA}$
$a = 8.0283 (7) \text{ \AA}$	Cell parameters from 4336 reflections
$b = 8.4072 (7) \text{ \AA}$	$\theta = 2.6\text{--}27.4^\circ$
$c = 10.6611 (9) \text{ \AA}$	$\mu = 0.27 \text{ mm}^{-1}$
$\alpha = 85.735 (1)^\circ$	$T = 173 \text{ K}$
$\beta = 86.319 (1)^\circ$	Block, colourless
$\gamma = 68.110 (1)^\circ$	$0.40 \times 0.40 \times 0.20 \text{ mm}$
$V = 665.33 (10) \text{ \AA}^3$	

### Data collection

Bruker SMART APEXII CCD diffractometer	2325 independent reflections
Radiation source: Rotating Anode HELIOS	2153 reflections with $I > 2\sigma(I)$
Detector resolution: $10.0 \text{ pixels mm}^{-1}$	$R_{\text{int}} = 0.036$
$\varphi$ and $\omega$ scans	$\theta_{\text{max}} = 25.0^\circ, \theta_{\text{min}} = 1.9^\circ$
Absorption correction: multi-scan (SADABS; Bruker, 2009)	$h = -9 \rightarrow 9$
$T_{\text{min}} = 0.899, T_{\text{max}} = 0.948$	$k = -9 \rightarrow 9$
4954 measured reflections	$l = -12 \rightarrow 12$

### Refinement

Refinement on $F^2$	Primary atom site location: structure-invariant direct methods
Least-squares matrix: full	Secondary atom site location: difference Fourier map
$R[F^2 > 2\sigma(F^2)] = 0.033$	Hydrogen site location: difference Fourier map
$wR(F^2) = 0.096$	H-atom parameters constrained
$S = 1.04$	$w = 1/[\sigma^2(F_o^2) + (0.0477P)^2 + 0.4337P]$
2325 reflections	where $P = (F_o^2 + 2F_c^2)/3$
200 parameters	$(\Delta/\sigma)_{\text{max}} < 0.001$
	$\Delta\rho_{\text{max}} = 0.76 \text{ e \AA}^{-3}$

0 restraints

$$\Delta\rho_{\min} = -0.34 \text{ e } \text{\AA}^{-3}$$

*Special details*

**Geometry.** All esds (except the esd in the dihedral angle between two l.s. planes) are estimated using the full covariance matrix. The cell esds are taken into account individually in the estimation of esds in distances, angles and torsion angles; correlations between esds in cell parameters are only used when they are defined by crystal symmetry. An approximate (isotropic) treatment of cell esds is used for estimating esds involving l.s. planes.

**Refinement.** Refinement of  $F^2$  against ALL reflections. The weighted R-factor wR and goodness of fit S are based on  $F^2$ , conventional R-factors R are based on F, with F set to zero for negative  $F^2$ . The threshold expression of  $F^2 > 2\text{sigma}(F^2)$  is used only for calculating R-factors(gt) etc. and is not relevant to the choice of reflections for refinement. R-factors based on  $F^2$  are statistically about twice as large as those based on F, and R- factors based on ALL data will be even larger.

*Fractional atomic coordinates and isotropic or equivalent isotropic displacement parameters ( $\text{\AA}^2$ )*

	x	y	z	$U_{\text{iso}}^*/U_{\text{eq}}$
S	0.80463 (5)	0.18763 (6)	0.60869 (4)	0.02335 (16)
F	0.68941 (16)	-0.01363 (16)	0.02490 (11)	0.0385 (3)
O1	0.29585 (16)	0.35961 (16)	0.51174 (11)	0.0228 (3)
O2	0.25335 (17)	0.57506 (17)	0.98364 (12)	0.0292 (3)
O3	-0.01602 (17)	0.65674 (17)	0.88470 (12)	0.0285 (3)
O4	0.84924 (18)	0.30301 (18)	0.68884 (15)	0.0372 (4)
C1	0.5684 (2)	0.2707 (2)	0.59585 (16)	0.0206 (4)
C2	0.4380 (2)	0.3671 (2)	0.68856 (16)	0.0204 (4)
C3	0.4467 (2)	0.4134 (2)	0.81182 (16)	0.0225 (4)
H3	0.5537	0.3792	0.8537	0.027*
C4	0.2853 (2)	0.5124 (2)	0.86443 (16)	0.0229 (4)
C5	0.0711 (3)	0.6920 (2)	0.98677 (18)	0.0289 (4)
H5A	0.0661	0.8093	0.9776	0.035*
H5B	0.0117	0.6769	1.0664	0.035*
C6	0.1218 (2)	0.5638 (2)	0.80438 (17)	0.0222 (4)
C7	0.1075 (2)	0.5200 (2)	0.68512 (17)	0.0237 (4)
H7	-0.0006	0.5531	0.6449	0.028*
C8	0.2736 (2)	0.4202 (2)	0.63084 (16)	0.0209 (4)
C9	0.4775 (2)	0.2695 (2)	0.49235 (16)	0.0214 (4)
C10	0.5313 (2)	0.1926 (2)	0.37027 (16)	0.0214 (4)
C11	0.4330 (2)	0.2717 (2)	0.26424 (16)	0.0227 (4)
H11	0.3323	0.3721	0.2719	0.027*
C12	0.4845 (2)	0.2015 (2)	0.14773 (17)	0.0251 (4)
H12	0.4192	0.2530	0.0769	0.030*
C13	0.6347 (2)	0.0537 (2)	0.13962 (17)	0.0259 (4)
C14	0.7337 (2)	-0.0306 (2)	0.24219 (17)	0.0272 (4)
H14	0.8334	-0.1315	0.2336	0.033*
C15	0.6797 (2)	0.0397 (2)	0.35841 (17)	0.0258 (4)
H15	0.7430	-0.0156	0.4292	0.031*
C16	0.8251 (3)	-0.0009 (3)	0.70708 (19)	0.0321 (4)
H16A	0.9492	-0.0629	0.7248	0.048*

## supplementary materials

---

H16B	0.7803	-0.0726	0.6646	0.048*
H16C	0.7568	0.0320	0.7845	0.048*

### Atomic displacement parameters ( $\text{\AA}^2$ )

	$U^{11}$	$U^{22}$	$U^{33}$	$U^{12}$	$U^{13}$	$U^{23}$
S	0.0165 (2)	0.0224 (3)	0.0292 (3)	-0.00522 (18)	-0.00198 (17)	0.00089 (18)
F	0.0361 (7)	0.0477 (7)	0.0256 (6)	-0.0067 (6)	0.0027 (5)	-0.0155 (5)
O1	0.0185 (6)	0.0260 (7)	0.0216 (6)	-0.0047 (5)	-0.0023 (5)	-0.0047 (5)
O2	0.0273 (7)	0.0341 (7)	0.0212 (6)	-0.0043 (6)	-0.0010 (5)	-0.0076 (5)
O3	0.0223 (7)	0.0311 (7)	0.0269 (7)	-0.0034 (5)	0.0030 (5)	-0.0071 (5)
O4	0.0264 (7)	0.0293 (8)	0.0570 (10)	-0.0088 (6)	-0.0137 (6)	-0.0068 (7)
C1	0.0175 (8)	0.0201 (8)	0.0224 (9)	-0.0050 (7)	-0.0004 (7)	-0.0011 (7)
C2	0.0193 (8)	0.0197 (8)	0.0217 (8)	-0.0065 (7)	-0.0012 (7)	-0.0004 (7)
C3	0.0210 (9)	0.0248 (9)	0.0218 (9)	-0.0082 (7)	-0.0034 (7)	-0.0004 (7)
C4	0.0262 (9)	0.0227 (9)	0.0194 (8)	-0.0083 (7)	-0.0011 (7)	-0.0018 (7)
C5	0.0283 (10)	0.0282 (10)	0.0266 (9)	-0.0056 (8)	0.0026 (8)	-0.0080 (8)
C6	0.0196 (9)	0.0194 (9)	0.0255 (9)	-0.0052 (7)	0.0020 (7)	-0.0009 (7)
C7	0.0175 (8)	0.0243 (9)	0.0271 (9)	-0.0050 (7)	-0.0030 (7)	-0.0013 (7)
C8	0.0217 (9)	0.0210 (9)	0.0197 (8)	-0.0072 (7)	-0.0015 (7)	-0.0026 (7)
C9	0.0176 (8)	0.0207 (9)	0.0236 (9)	-0.0044 (7)	-0.0003 (7)	-0.0010 (7)
C10	0.0212 (9)	0.0222 (9)	0.0219 (9)	-0.0093 (7)	0.0003 (7)	-0.0031 (7)
C11	0.0204 (9)	0.0211 (9)	0.0259 (9)	-0.0069 (7)	-0.0010 (7)	-0.0018 (7)
C12	0.0261 (9)	0.0283 (10)	0.0219 (9)	-0.0109 (8)	-0.0034 (7)	0.0000 (7)
C13	0.0274 (10)	0.0310 (10)	0.0218 (9)	-0.0130 (8)	0.0028 (7)	-0.0089 (7)
C14	0.0228 (9)	0.0252 (10)	0.0303 (10)	-0.0038 (7)	-0.0005 (7)	-0.0076 (8)
C15	0.0249 (9)	0.0254 (9)	0.0249 (9)	-0.0061 (8)	-0.0051 (7)	-0.0009 (7)
C16	0.0292 (10)	0.0277 (10)	0.0383 (11)	-0.0100 (8)	-0.0077 (8)	0.0079 (8)

### Geometric parameters ( $\text{\AA}$ , $^\circ$ )

S—O4	1.4903 (14)	C5—H5B	0.9700
S—C1	1.7707 (17)	C6—C7	1.373 (3)
S—C16	1.7944 (19)	C7—C8	1.398 (2)
F—C13	1.363 (2)	C7—H7	0.9300
O1—C8	1.380 (2)	C9—C10	1.464 (2)
O1—C9	1.380 (2)	C10—C15	1.397 (3)
O2—C4	1.384 (2)	C10—C11	1.398 (2)
O2—C5	1.426 (2)	C11—C12	1.387 (3)
O3—C6	1.379 (2)	C11—H11	0.9300
O3—C5	1.436 (2)	C12—C13	1.375 (3)
C1—C9	1.364 (2)	C12—H12	0.9300
C1—C2	1.443 (2)	C13—C14	1.380 (3)
C2—C8	1.395 (2)	C14—C15	1.386 (3)
C2—C3	1.411 (2)	C14—H14	0.9300
C3—C4	1.363 (3)	C15—H15	0.9300
C3—H3	0.9300	C16—H16A	0.9600
C4—C6	1.401 (3)	C16—H16B	0.9600
C5—H5A	0.9700	C16—H16C	0.9600

O4—S—C1	107.29 (8)	O1—C8—C2	110.69 (15)
O4—S—C16	105.76 (9)	O1—C8—C7	123.97 (15)
C1—S—C16	98.28 (9)	C2—C8—C7	125.34 (16)
C8—O1—C9	106.48 (13)	C1—C9—O1	110.48 (15)
C4—O2—C5	105.53 (13)	C1—C9—C10	133.97 (16)
C6—O3—C5	105.04 (14)	O1—C9—C10	115.53 (14)
C9—C1—C2	107.49 (15)	C15—C10—C11	119.35 (16)
C9—C1—S	126.25 (13)	C15—C10—C9	120.68 (16)
C2—C1—S	126.00 (13)	C11—C10—C9	119.97 (16)
C8—C2—C3	120.39 (16)	C12—C11—C10	120.44 (16)
C8—C2—C1	104.84 (15)	C12—C11—H11	119.8
C3—C2—C1	134.76 (16)	C10—C11—H11	119.8
C4—C3—C2	114.39 (16)	C13—C12—C11	118.26 (16)
C4—C3—H3	122.8	C13—C12—H12	120.9
C2—C3—H3	122.8	C11—C12—H12	120.9
C3—C4—O2	126.99 (16)	F—C13—C12	118.70 (16)
C3—C4—C6	124.06 (16)	F—C13—C14	118.04 (16)
O2—C4—C6	108.93 (15)	C12—C13—C14	123.25 (17)
O2—C5—O3	107.68 (14)	C13—C14—C15	117.97 (17)
O2—C5—H5A	110.2	C13—C14—H14	121.0
O3—C5—H5A	110.2	C15—C14—H14	121.0
O2—C5—H5B	110.2	C14—C15—C10	120.68 (17)
O3—C5—H5B	110.2	C14—C15—H15	119.7
H5A—C5—H5B	108.5	C10—C15—H15	119.7
C7—C6—O3	127.18 (16)	S—C16—H16A	109.5
C7—C6—C4	123.29 (16)	S—C16—H16B	109.5
O3—C6—C4	109.50 (15)	H16A—C16—H16B	109.5
C6—C7—C8	112.52 (16)	S—C16—H16C	109.5
C6—C7—H7	123.7	H16A—C16—H16C	109.5
C8—C7—H7	123.7	H16B—C16—H16C	109.5
O4—S—C1—C9	144.09 (16)	C3—C2—C8—O1	-179.45 (15)
C16—S—C1—C9	-106.47 (17)	C1—C2—C8—O1	1.26 (19)
O4—S—C1—C2	-29.26 (18)	C3—C2—C8—C7	0.1 (3)
C16—S—C1—C2	80.17 (17)	C1—C2—C8—C7	-179.22 (17)
C9—C1—C2—C8	-0.86 (19)	C6—C7—C8—O1	179.98 (16)
S—C1—C2—C8	173.53 (13)	C6—C7—C8—C2	0.5 (3)
C9—C1—C2—C3	-179.99 (19)	C2—C1—C9—O1	0.2 (2)
S—C1—C2—C3	-5.6 (3)	S—C1—C9—O1	-174.20 (12)
C8—C2—C3—C4	-0.8 (2)	C2—C1—C9—C10	-178.74 (18)
C1—C2—C3—C4	178.23 (18)	S—C1—C9—C10	6.9 (3)
C2—C3—C4—O2	179.41 (16)	C8—O1—C9—C1	0.61 (19)
C2—C3—C4—C6	1.0 (3)	C8—O1—C9—C10	179.74 (14)
C5—O2—C4—C3	171.11 (18)	C1—C9—C10—C15	30.2 (3)
C5—O2—C4—C6	-10.26 (19)	O1—C9—C10—C15	-148.66 (16)
C4—O2—C5—O3	17.49 (19)	C1—C9—C10—C11	-150.3 (2)
C6—O3—C5—O2	-18.03 (19)	O1—C9—C10—C11	30.9 (2)
C5—O3—C6—C7	-170.31 (18)	C15—C10—C11—C12	-1.5 (3)
C5—O3—C6—C4	11.72 (19)	C9—C10—C11—C12	178.93 (16)

## supplementary materials

---

C3—C4—C6—C7	-0.4 (3)	C10—C11—C12—C13	-0.5 (3)
O2—C4—C6—C7	-179.07 (16)	C11—C12—C13—F	-178.17 (16)
C3—C4—C6—O3	177.68 (16)	C11—C12—C13—C14	1.8 (3)
O2—C4—C6—O3	-1.0 (2)	F—C13—C14—C15	178.87 (17)
O3—C6—C7—C8	-178.09 (16)	C12—C13—C14—C15	-1.1 (3)
C4—C6—C7—C8	-0.4 (3)	C13—C14—C15—C10	-1.0 (3)
C9—O1—C8—C2	-1.19 (19)	C11—C10—C15—C14	2.3 (3)
C9—O1—C8—C7	179.28 (16)	C9—C10—C15—C14	-178.20 (17)

### Hydrogen-bond geometry ( $\text{\AA}$ , $^\circ$ )

$D-H\cdots A$	$D-H$	$H\cdots A$	$D\cdots A$	$D-H\cdots A$
C3—H3 $\cdots$ O2 <sup>i</sup>	0.93	2.54	3.383 (2)	151
C14—H14 $\cdots$ O4 <sup>ii</sup>	0.93	2.57	3.368 (2)	144

Symmetry codes: (i)  $-x+1, -y+1, -z+2$ ; (ii)  $-x+2, -y, -z+1$ .



Fig. 1

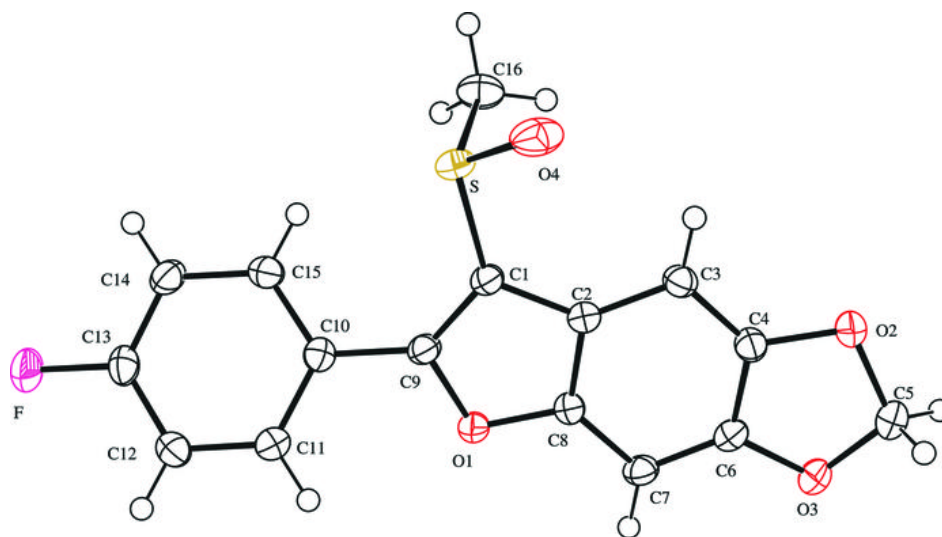


Fig. 2

